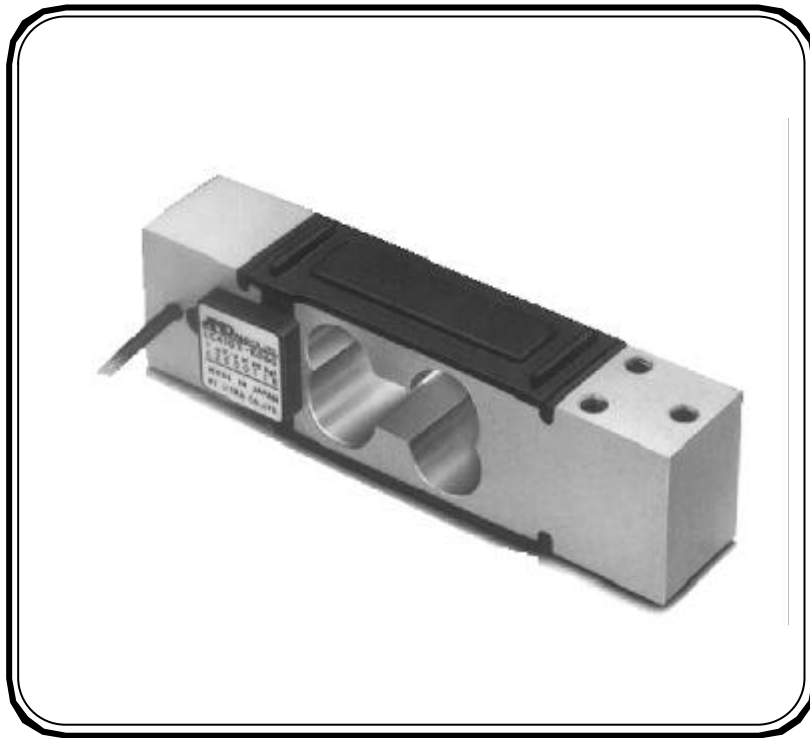


LC-4102 Series

Loadcells



- An aluminium single point loadcell
- Available with or without waterproofing (30kg version only)
- Parallelogram type construction for reliability and strength
- Five capacities suitable for bench scale applications
- Temperature compensated from -10°C ~ $+40^{\circ}\text{C}$

LC-4102 Series

Loadcells

Specifications

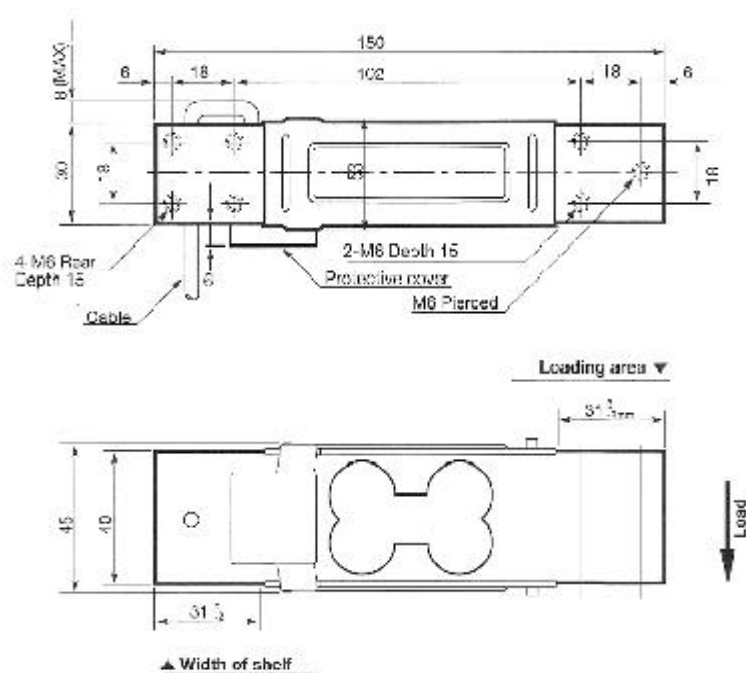
Rated Capacities	10kgf, 15kgf, 30kgf, 60kgf, 150kgf
Rated Output	1mV/V+15% -0
Maximum safe overload	300% of rated capacity
Combined error	+/-0.015% of rated output
Creep	+/-0.05% of rated output/hour
Zero balance	+/-20% of rated output
Recommended excitation voltage	12V
Maximum excitation voltage	15V
Input terminal resistance	Approximately 400ohms
Output terminal resistance	350+/-5ohms
Insulation resistance	> 5000Megohms at DC50V
Typical cable length	1.5metres

Dimensions

All dimensions are in millimetres

Cable Colour Code

RED	EXC+
WHITE	EXC-
GREEN	SIG+
BLUE	SIG-
YELLOW	SHIELD



Supplied by

AND
A&D MERCURY PTY. LTD